

TOEZICHTPUT/ OPZETSTUK/ DEKSEL CHAMBRE DE VISITE/ REHAUSSE / COUVERCLE

TP_40/48 IE

bovenaanzicht vue de dessus

Toezichtput
Chambre de visite

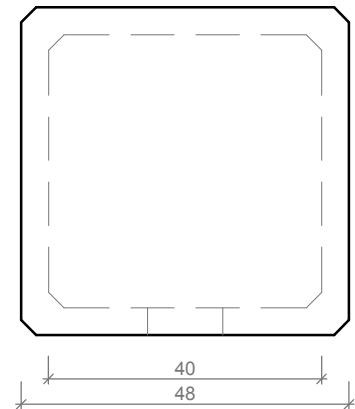
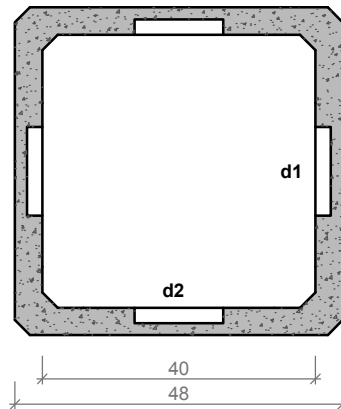
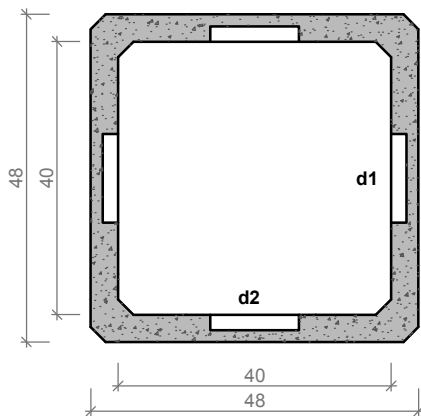
Kg/St: 70
St/Pal: 12

Opzetstuk
Rehausse

Kg/St: 50
St/Pal: 12

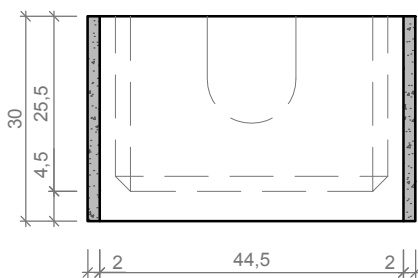
Deksel
Couvercle

Kg/St: 23
St/Pal: 12

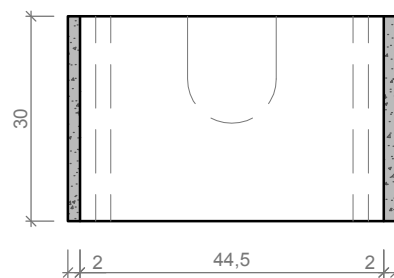


doorsnede coupe

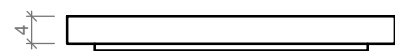
Toezichtput
Chambre de visite



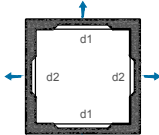
Opzetstuk
Rehausse



Deksel
Couvercle



vooraanzicht vue frontale

| Kenmerken | TP_40/48 IE | Caractéristiques | Principe |
|--------------------------|-------------------------|------------------------------|--|
| in - / uitlaat d1 | Ø 13cm | entrée / sortie |  <p>Plaatsingsvoorschriften op aanvraag Prescriptions de pose sur demande</p> |
| in - / uitlaat d2 | Ø 13cm | tuyau d'attente - aspiration | |
| hijsslussen | - | points d' ancrage | |
| buitenafmetingen | 48 X 48 X 30 | dimensions extérieures | |
| verkeersbelastingsklasse | A15 (NBN EN 124) | classe de charge de trafic | |
| omgevingsklasse | EE3 (NBN B 15-001) | classe d'environnement | |
| milieuklasse | XC4, XF1 (NBN EN 206-1) | classe d' exposition | |
| druksterkteklasse | C35/45 | classe de résistance | |

afmetingen in cm - wijzigingen voorbehouden
dimensions en cm - sous réserve de modifications